

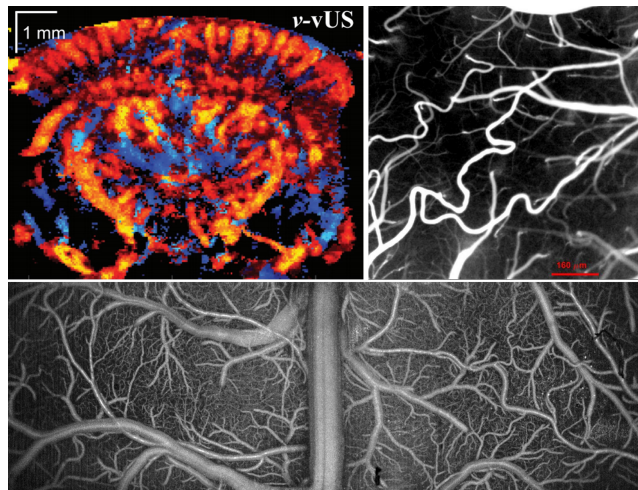


Principles and applications of non-invasive blood flow imaging

Dmitry Postnov

Center of Functionally Integrative Neuroscience, Aarhus University

Abnormalities in microcirculation are associated with the leading causes of death worldwide, including hypertension, diabetes, and dementia. Moreover, these abnormalities precede noticeable changes in blood pressure or blood sugar levels making their monitoring pivotal in clinical and research practice. As a result, various techniques have been developed to address the need. Among them, blood flow imaging has become a “must-have” tool, allowing major discoveries and earlier disease diagnostics. This seminar will discuss the principles and applications of speckle dynamics imaging - the most-established class of non-invasive blood flow imaging techniques.



Friday, March 25th at 13.00
Zoophysiology Seminar Room (1131-127)