

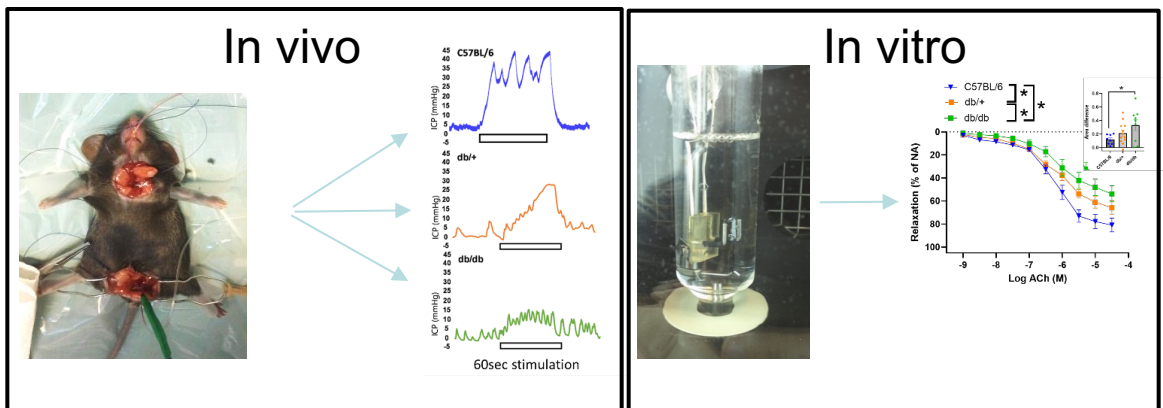


Erectile function during impaired homeostasis

Simon G Comerma Steffensen

Pulmonary and Cardiovascular Pharmacology Research Group, Biomedicine, Aarhus University

My research focuses on Cardiovascular Pharmacology and Physiology related to endothelial function with a focus on potassium channels. One of the main techniques related to this is the model of erectile function. Erectile function depends on the good integration between the body functions of the nervous system and the cardiovascular system. Erectile dysfunction is an indirect marker of endothelial dysfunction therefore disease models of the nervous system (depression, Parkinson, etc), metabolic (obesity, diabetes, inflammation, etc.), and cardiovascular (atherosclerosis, high blood pressure, etc.); are the main interest to assess their translatability and evaluate new treatments for human patients. I will show a resume of my research on monoamine reuptake inhibitors and potassium channel blockers research that can be used in biomedicine, but could have implications for the broad sense of multispecies evaluation of cardiovascular, endothelial/dysfunction, and the specific species with hematogenic erectile function.



Friday, May 20th, 13.00
Zoophysiology Seminar Room (1131-127)