

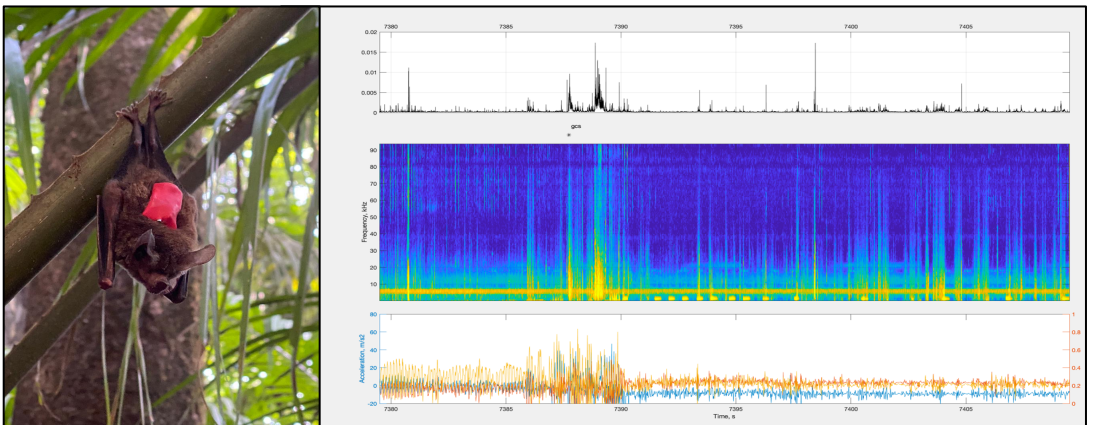


A bat's-ear view: how sensory information flow governs behavioural transitions in the wild

Anne Leonie Baier

Zoophysiology, AU

Our brain commands our behaviour, but it needs sensory input to do so. Biosonar is a particularly enticing sensory system, because we can tap directly into the sensory stream. Despite having profuse knowledge of the striking biosonar powers of bats, we know very little about how they apply these capabilities to play critical roles in a large suite of ecosystems. I will talk about how we use a microphone/motion-sensor tag to study Central American frog-eating bats (*Trachops cirrhosus*), monitoring their sensory input along with detailed information on flight and prey-capture behaviour as they forage on the wing in the wild.



Friday, May 12th from 13.00 to 14.00 in the Zoophysiology Seminar Room (1131-127)